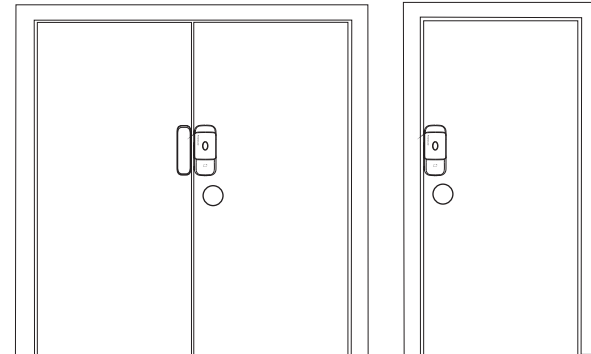


모조지 80g / 184*260mm

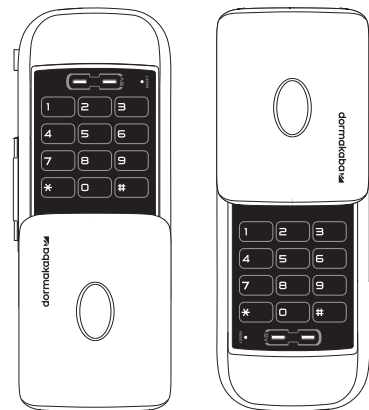
dormakaba

Installation Manual

Digital Glass door locks can be installed on doors with single or double leaf glass doors. It is suitable for doors that can open and rotate inward or outward and is not suitable for sliding doors.

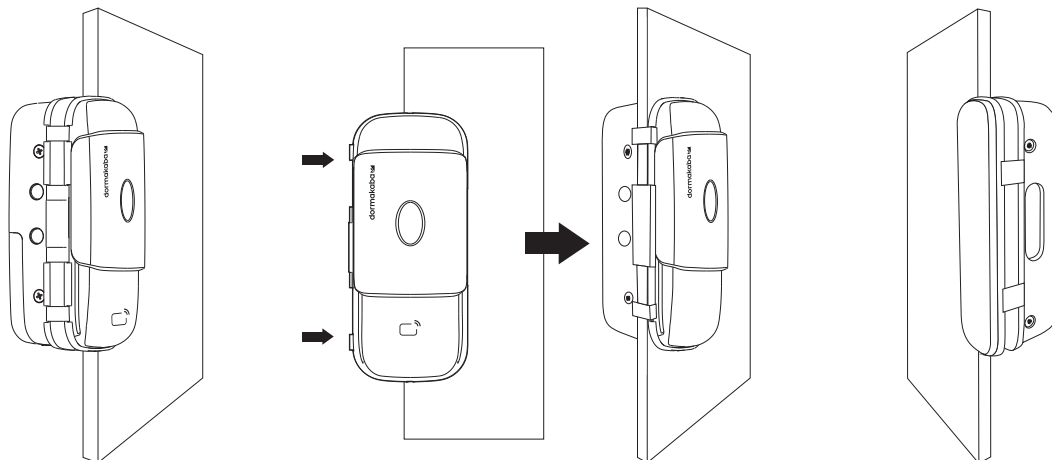


The body is suitable for both left and right open door.



Double leaf glass door

1. Slide the door lock into the glass door. The keypad should be facing the outside of the room and the side with the battery box facing the inside of the room.
2. Press the door lock onto the glass until the whole body of the door lock reaches the glass.
(If you put water on the glass surface, you can push it easily.)
3. Close the door and protrude the dead bolt to check and display the height required for striker installation.

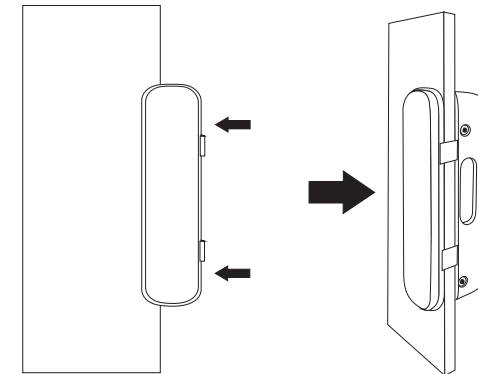


PTSP3460ONTA REV.01

dormakaba

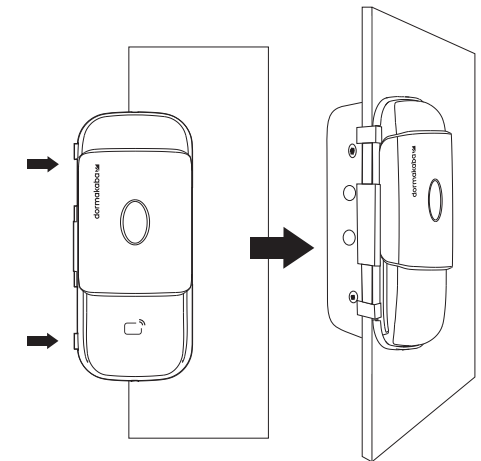
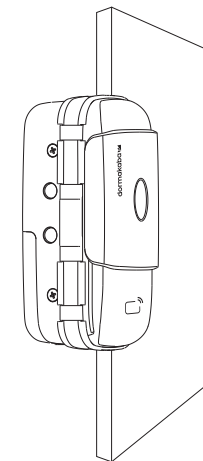
Installation Manual

4. Press the striker against the glass until the whole body of the striker touches the glass as shown above.
5. Close the door and make sure that the door lock and striker are aligned. Adjust the position if necessary.

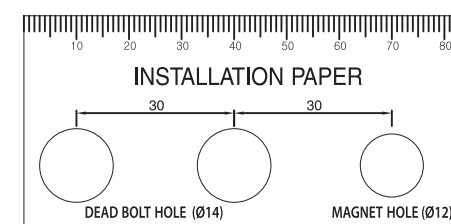


Single leaf glass door

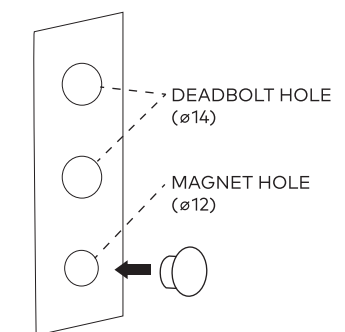
1. Slide the door lock into the glass door. The keypad should be facing the outside of the room and the battery box facing the inside of the room.
2. Press the door lock onto the glass until the whole body of the door lock reaches the glass.
(If you put water on the glass, you can push it easily.)



3. Close the door and protrude the dead bolt to the height required for the striker.
Use the following installation paper and mark the position of center hole among the three holes and drill using drill. (14 holes for dead bolts, 12 holes for fixing magnets)



4. Slide the magnet that in the 12 hole.



CAUTION

Only install on glass doors with the thickness of 12mm.
After installation, insert the batteries while the door is open.