

Wi-Fi Digital Door Viewer User Manual



Search “With – For your smart home” in Apple App Store, Google play or scan above QR code to download the application client.

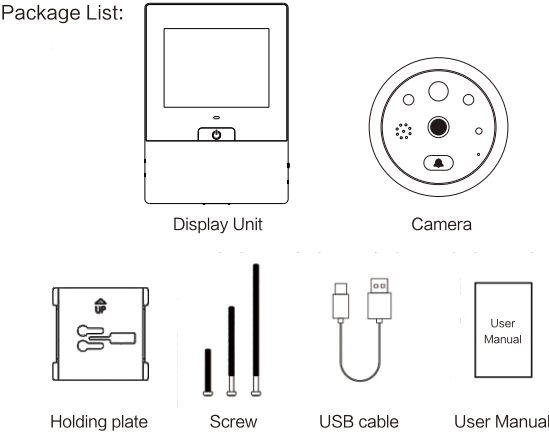
* The company has the right to improve the product without notifying the user, including the product appearance, function parameters, usage methods, etc.

* The company does not provide guarantee, statement and promise when the products are used for any special purpose.

* The parameters of electronic products may change under different external environments. These products can only be used in certified environments.

01 Safety Precautions and Package List:

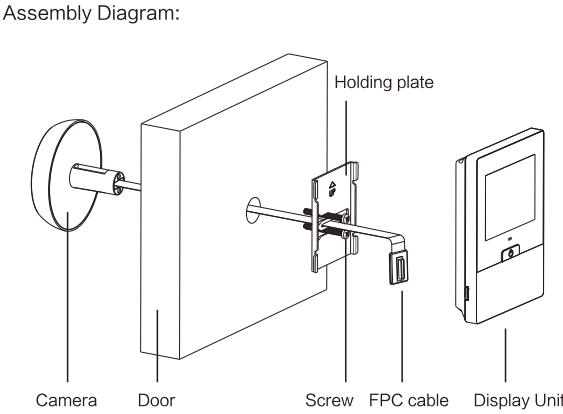
- Precautions:**
- ① DO NOT place this product on an uneven or unstable object to avoid damage caused by falling.
 - ② DO NOT press hard on LCD screen to avoid damage to LCD screen and the panel.
 - ③ DO NOT squeeze the lens of the camera or the protruding black motion detection sensor to avoid the damage to the hardware.
 - ④ DO NOT place this product under high temperature, high humidity, or in a hostile environment such as dust and salt fog. And do not expose it to rain, to avoid malfunction.
 - ⑤ When installing the display unit, be sure to handle it carefully and do not pull the FPC cable hard. Otherwise the cable will be broken and the unit can not work properly. As a result, it is not covered by the warranty.



02 Installation Instructions:

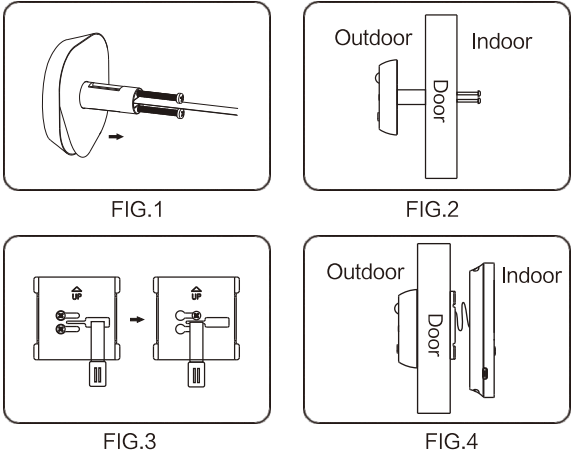
- Installation requirement:**
- ① Fits barrel hole: 14mm–35mm
 - ② Fits door: 32mm–104mm
 - ③ Before installing the camera with the screws, check the thickness of the door and select the corresponding screw according to the thickness.

Remark: Door thickness between 32mm to 54mm, use 25mm screw
Door thickness between 54mm to 79mm, use 50mm screw
Door thickness between 79mm to 104mm, use 75mm screw

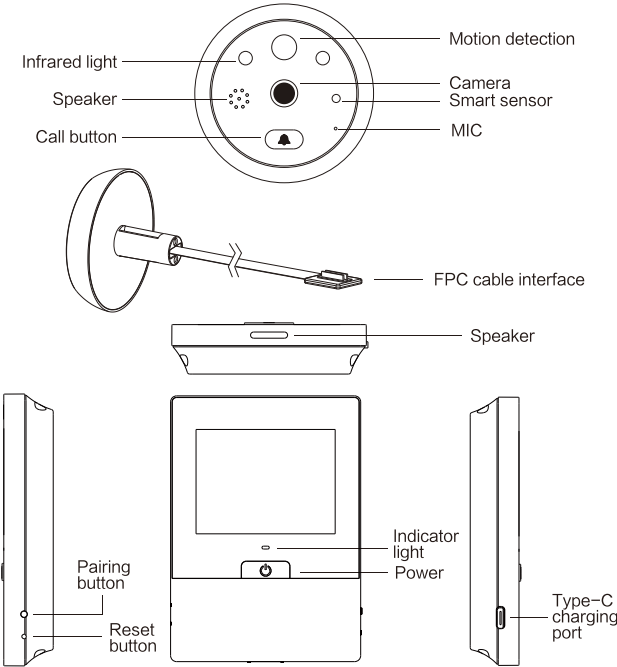


03 Installation Instructions:

- ① Remove the traditional optical door viewer on the door (If no existing hole on the door, please use a drill to drill a round hole with a diameter of 14mm) , select the screw that fits the door thickness and screw into the camera hole.
- ② Peel off 3M sticker on the back side of the camera and carefully cross the FPC cable through the door hole from the outside. Stick the camera on the door with the call button at the bottom.
- ③ Peel off 3M sticker on the back side of the holding plate, cross the FPC cable through the middle hole of the holding plate and pass the screw through the upper and lower hole of the holding plate. Slide the holding plate to the left, stick the holding plate on the door and tighten the screw to fix the holding plate.
- ④ Connect the FPC cable to the display unit, bend the excess length of cable neatly and place it in the groove on the back side of the display unit. Finally buckle the display unit on the holding plate from top to bottom.



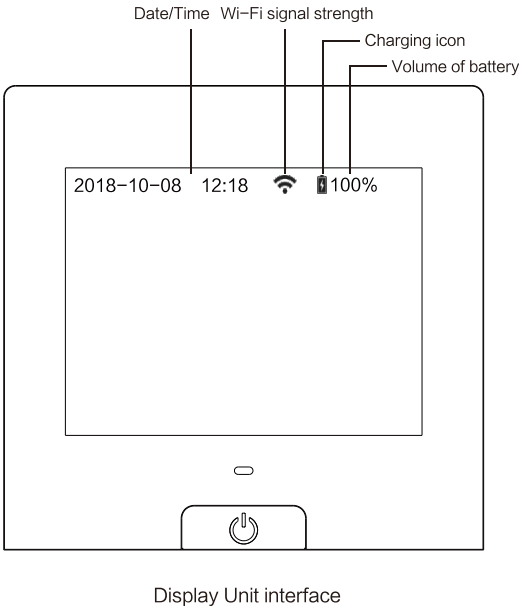
04 Parts Specification:



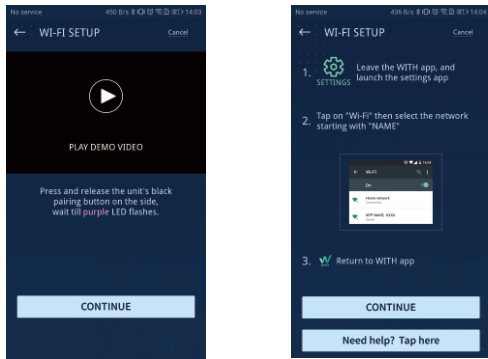
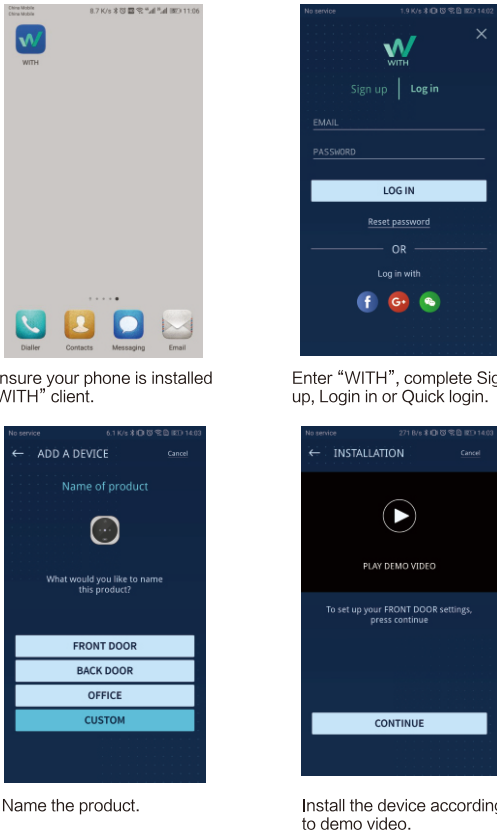
- **Power**
Press it to turn on the display to view the outdoor situation; press again to turn off the display and enter standby mode.
- **Reset button**
Press it to reset the device.
- **Paring button**
Press it to make Network configuration and device binding via App.
- **USB Type-C charging port**
Charge with 5V 1A USB charger. It takes 3.5–4 hours to fully charge.

05 Software Interface Function:

- Date/Time
- Wi-Fi signal strength
- Charging icon
- Volume of battery

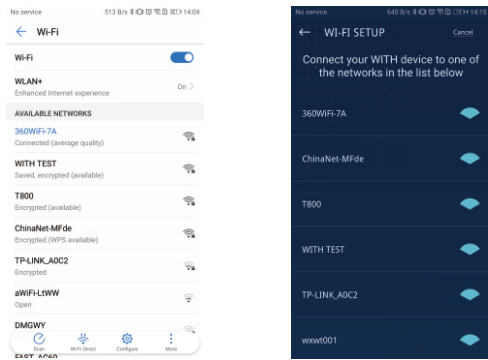


06 Device binding:



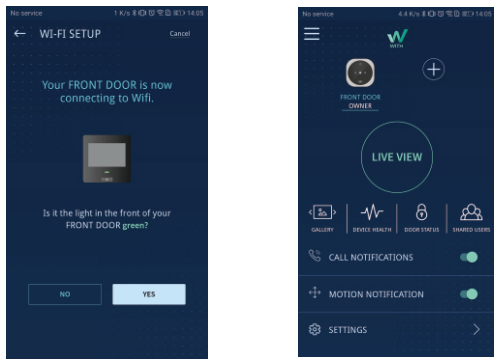
Press the pairing button on the right side as per the prompt to enter into pairing mode. At this time, there is a purple LED flashing at the bottom of the display.

Tap on “Settings” and enter Wi-Fi setting interface.



Select “WITH-XXX” network.

Return to “WITH” client, select router to be connected and enter the password.



Wait till green light on the device lights, select “YES” on the client.

Now you complete the paring. You can make LIVE VIEW on this interface.

07 Product Specification:

- Display Unit: 79mm*110mm*20mm
- Camera: 60mm*60mm*12.5mm
- Sensor: 1.0 Mega Pixel CMOS
- LCD resolution: 720P (1280*720)
- Fits barrel hole: 14mm–35mm
- Fits door: 32mm–104mm
- Power: 4000mAH lithium polymer battery
- LCD Screen: 2.8” TFT LCD (320*240)