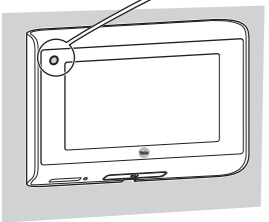


i



LED SIGNALS:	
	Long Red: Device is turned on and WiFi successfully connected
	Long Blue: Device going through firmware update
	Flashing Red & Purple: Device trying to connect to the WiFi router
	Flashing Red & Blue: In setup mode, device is connecting to Mobile Phone directly
	Flashing Red: Low battery warning

5

Pre-Cautions:

1. Please read this user manual carefully before using our product.
2. Never attempt to repair or modify this product or its accessories by yourself, to avoid injury and invalidating guarantee.
3. Any accidental factor such as being struck by lightning or any incorrect operation could cause a memory loss on the SD card. Keeping copies of the videos is recommended subjecting to the users' needs. Yale will not be responsible for any loss of data.
4. DO NOT use any chemicals to clean this product, such as alcohol or benzene thinner.
5. Please change the batteries soon after the low-battery indicator shows, in order to avoid any damage to this product which could be caused by battery weeping.
6. For remote viewing and notifications, the LOOK Digital Door Viewer requires an 2.4GHz 802.11 b/g/n WiFi network with at least 1mbs internet service.
7. To enhance the performance of photo / video recording into the SD card, it is recommended to format the SD card with FAT32 and allocation unit size at 32 kilobytes.

6



Yale® Digital Door Viewer

User Manual

Troubleshooting:

Symptoms	Suggested Actions
1 Screen doesn't turn on or is fuzzy	• Check if cable is correctly connected
2 Unit doesn't power up	• Check battery correctly installed • Recharge battery if out of power
3 Not receiving push notification in mobile phone	• Check WiFi connection is stable and strong • Check mobile phone data connection is stable and strong • Check mobile phone setting if the Yale LOOK is allowed to run in background and display push notifications.
4 Door Viewer LED keeps on flashing red and blue	• Device is in WiFi Direct mode, user can set up the device through the APP.

i

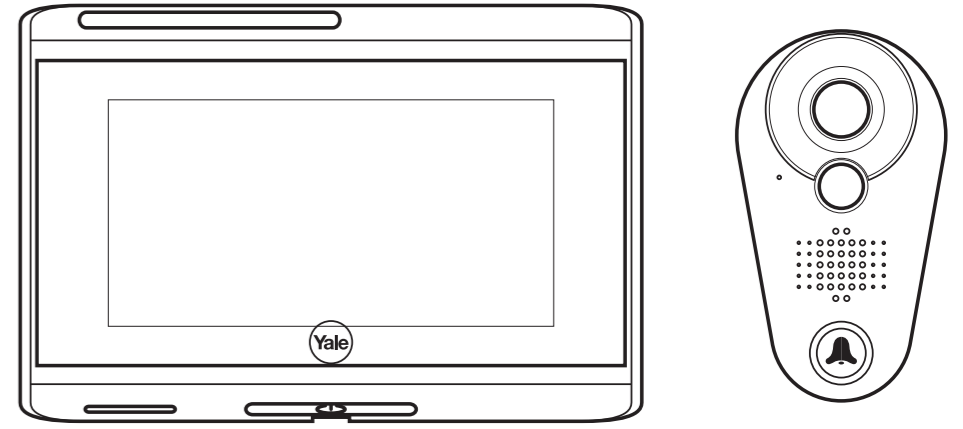
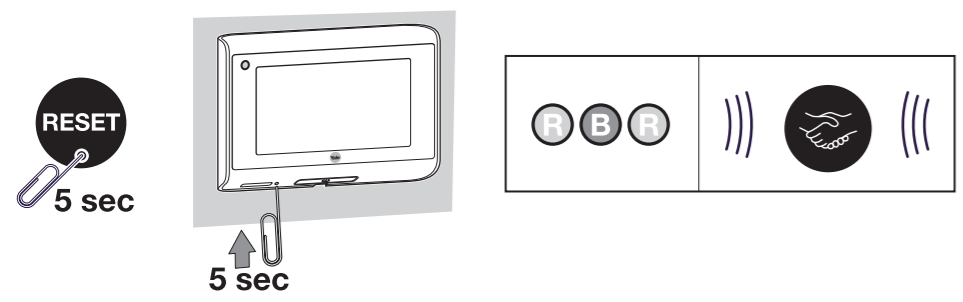


Note:
The battery life varies according to the activities frequency. User can modify the device settings to optimize the battery life.



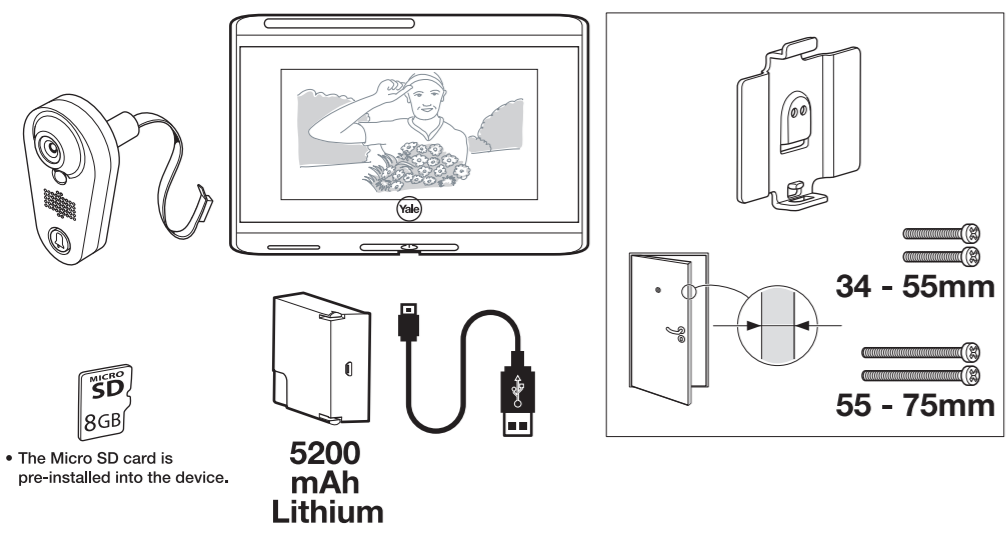
i

Resetting:
After resetting to factory defaults, the door viewer will be in WiFi direct mode. It will need to be configured again through the APP.



THE YALE BRAND, with its unparalleled global reach and range of products, reassures more people in more countries than any other consumer locking solution.

THE ASSA ABLOY GROUP is the world's leading manufacturer and supplier of locking solutions, dedicated to satisfying end-user needs for security, safety and convenience.

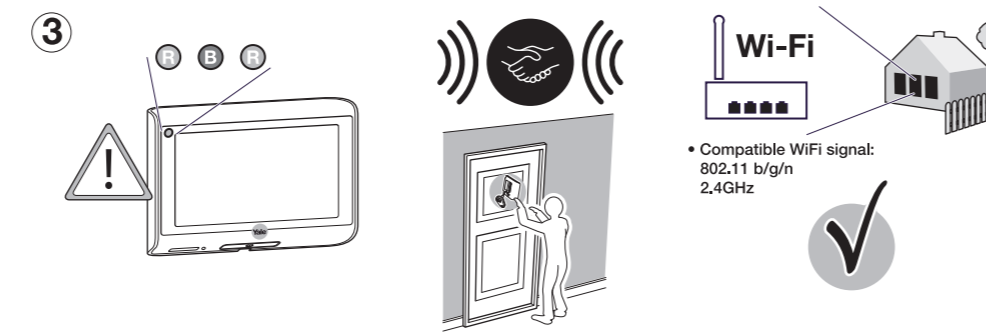
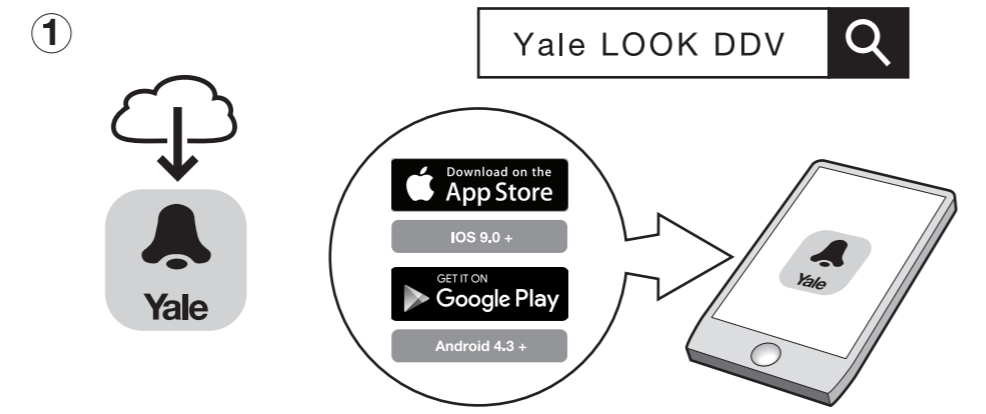


1



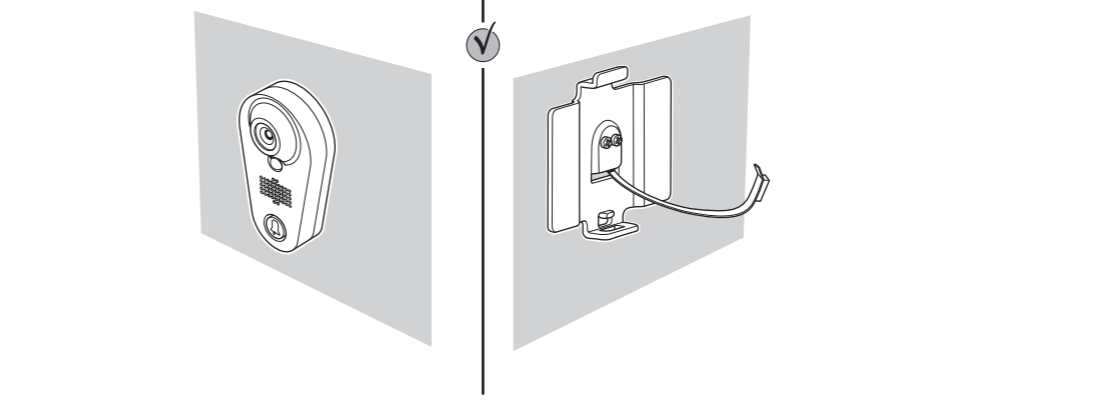
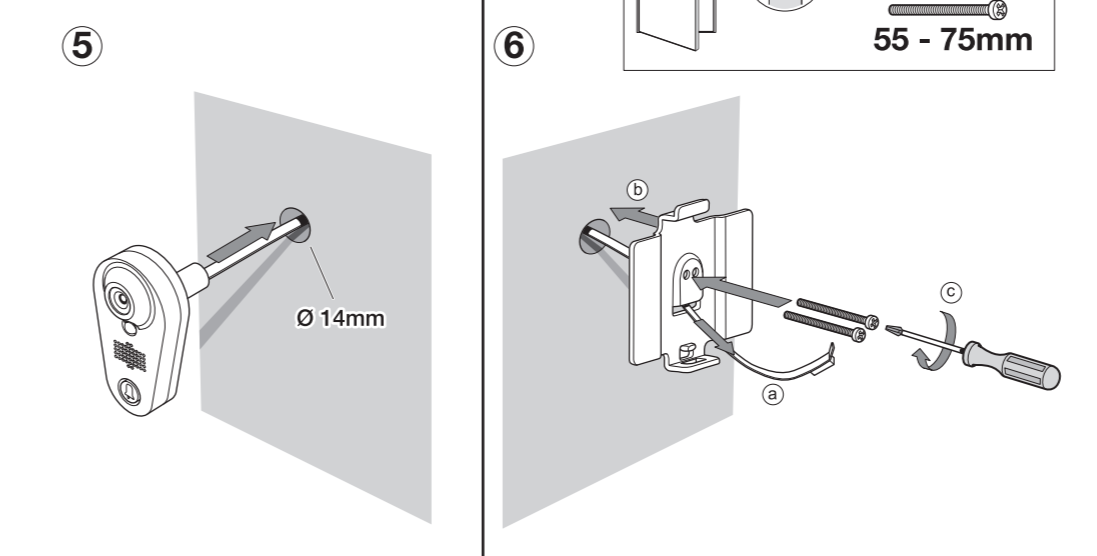
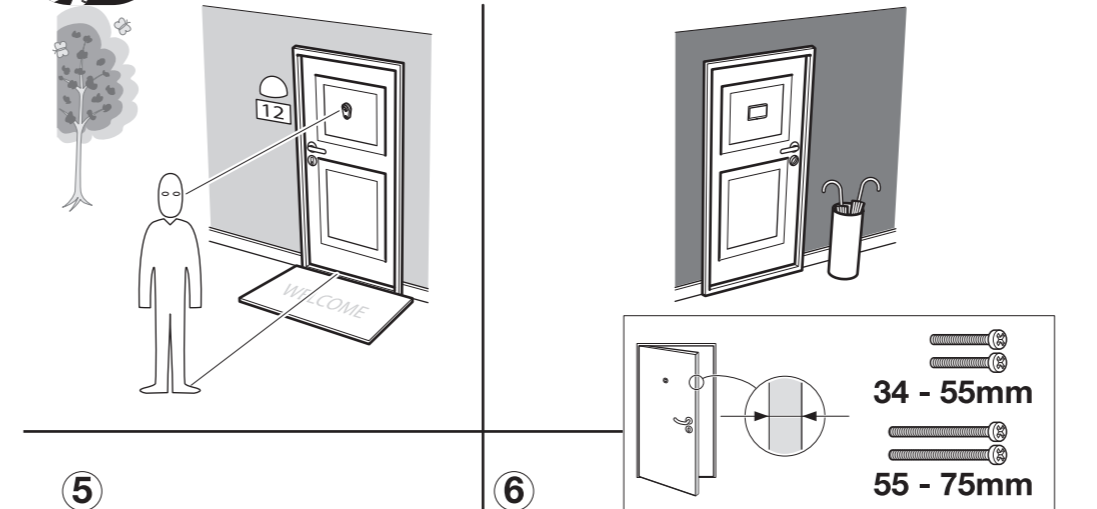
Software Installation

2



Device Installation

3



Device Installation

4

