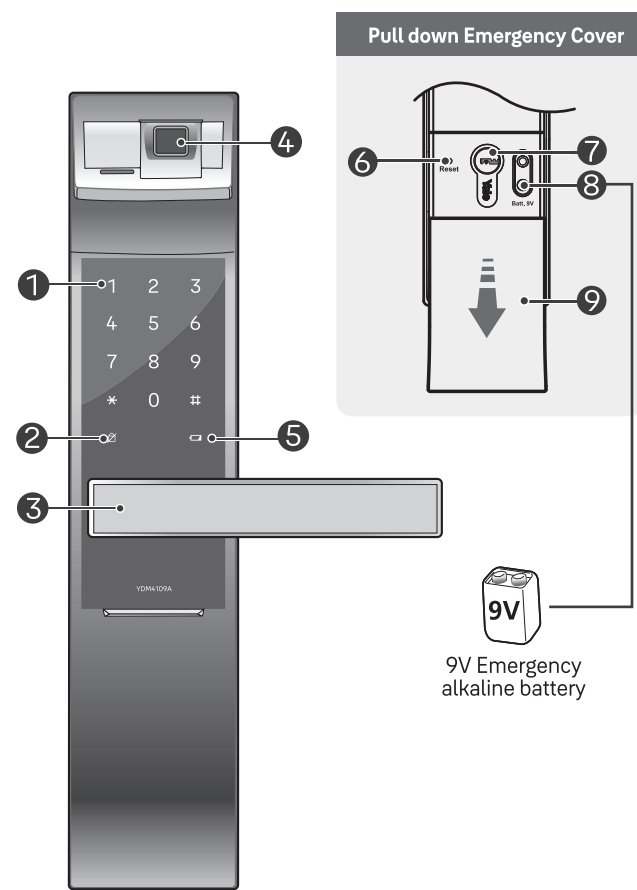
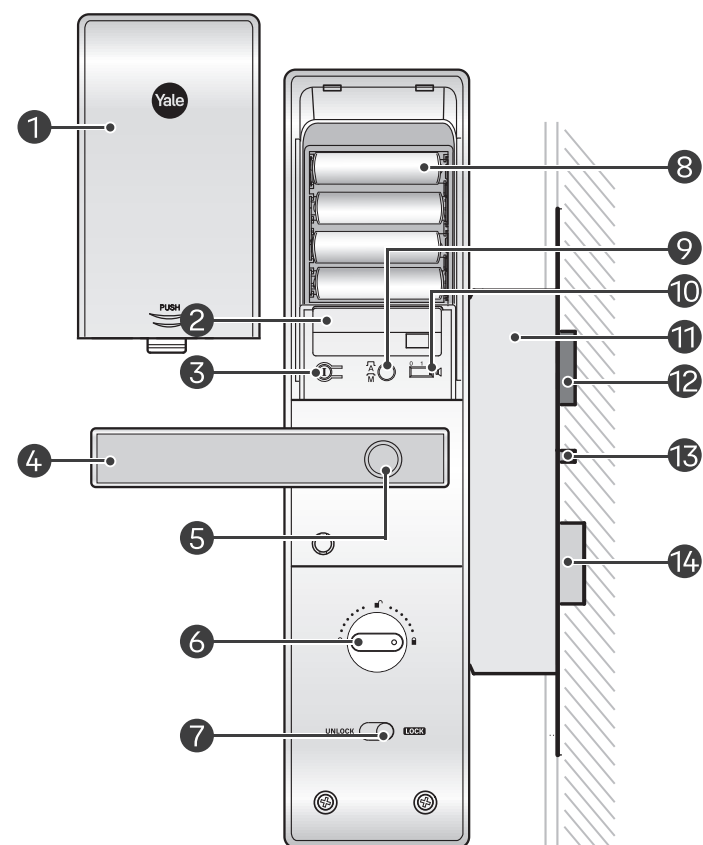


1. Front Body (Front Body, installation on the outside of the door)



4. Main Body (Main Body, installation on the inside of the door)



7. Setting Menu

Master Mode: Only a designated person who knows 'Master PIN Code' has authority to set features.
Normal Mode: If no user is assigned with master code without a designated person, anyone who knows 'User PIN Code' has authority to set features.
Visitor Code: Users with Visitor Code can only open the door with no access to change settings.
Onetime Code: The onetime code is used only once for unlocking the door lock and automatically deleted after usage.
User Slot Number: It should be 2 digits (like '01', '02'...'99', '00') and available in advanced mode.

	Touch the Keypad of the Front Body with your palm to begin
	Press * button on the Keypad
	Press # button on the Keypad
	Press (Registration) button in every steps to start or complete the session
	Enter User Fingerprint (Up to 100 Users)
	Enter User Code (4 ~ 10 digits)
	Enter Master Code (4 ~ 10 digits)
	Enter Visitor Code (Only 4 digits)
	Enter Onetime Code (Only 4 digits)
	User Slot Number should be 2 digits (like '01'...'99' and '00': Location of 100th user slot must be assigned '00' instead of '100'.)
	Rotation area to add more features

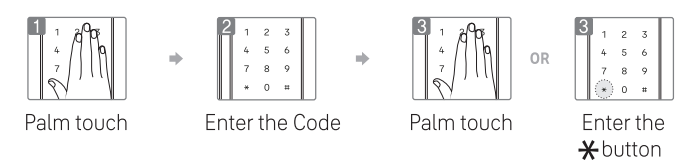
9. Normal Mode (Default Mode)

Normal mode is for convenient mode for anyone with user code to change various settings.

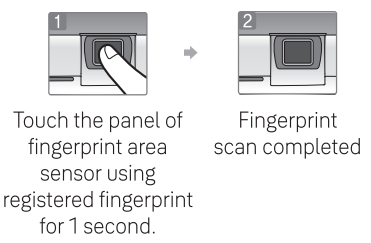
1 → 12 (Registration process) * Continue / (i) Complete

User Code Only 1 User											
Registr-ation	(i)	U	(i)								
Fingerprint Up to 100 Users											
Registr-ation	(i)	*	(i)								
Visitor Code Only 1 User											
Registr-ation	U	(i)	1	#	7	#	V	#	*	OR	(i)
Delete	(i)	U	#	3	#	U	#	*	OR	(i)	
Onetime Code Only 1 User Automatically deleted after use											
Registr-ation	U	(i)	2	#	7	#	0	#	*	OR	(i)
Delete	(i)	U	#	3	#	U	#	*	OR	(i)	
Delete all fingerprint credentials											
Delete	(i)	U	#	3	#	U	#	*	OR	(i)	

10. Unlocking Door with Code



11. Unlocking Door with Fingerprint



12. Safe Handle Feature

Disable Safe Handle Setting

- Open the battery cover and take out a hex wrench.
- Keep pushing the safe handle button.
- Turn the fixing screw clockwise to fix the button.

Enable Safe Handle Setting

- Open the battery cover and take out a hex wrench.
- Turn the fixing screw anticlockwise until the safe handle button comes out.

2. Basic Contents

Basic Contents

- Front Body
- Main Body
- Lock Case
- Strike Plate
- User Manual
- Installation Guide
- AA Batteries X 4
- Mechanical Keys X 2
- Screws
- Optional Accessories: Remote Controller, Remote Control Module, Bluetooth Module

3. Specifications

Parts	Specifications	Remarks
Front Body	68.6(W) X 320.7(H) X 40.1(D) mm	Operating temperature -15~55°C (5~131°F)
Main Body	72.8(W) X 306.6(H) X 37.0(D) mm	
Works for	4EA 1.5V AA Alkaline batteries(Operating voltage: 4.5~6V)	
Optional product	Remote controller: wireless	

* Battery life may vary depending on temperature, moisture levels, frequency of use and the quality of battery used.

5. Front Body

- Keypad(10-key)
- Dead Bolt Jam Lamp
- Lever
- Fingerprint Sensor
- Low Battery Indicator
- Reset button
- Emergency Mechanical Key Slot
- Emergency Power Supply Terminal
- Emergency Cover

6. Main Body

- Battery Cover
- Module Accessory Slot (Optional)
- (i) Registration button
- Lever
- Safe Handle Button
- Manual Thumb Turn
- Internal Forced Lock Switch
- 1.5V AA Alkaline Batteries (4PCS)
- Auto/Manual Lock Button
- Volume Control Switch
- Safe handle button
- Latch Bolt
- Automatic Locking Sensor
- Dead Bolt

8. Product Features

One Touch Fingerprint Access Secure one Touch Live fingerprint detection for personalized access. Unique Sensor not only provides high security but faster unlocking experience as well.

Yale Access App Yale Access gives you the peace of mind of knowing who and what you love is safe - no matter where you are- just at the touch of your smartphone.

Smart Touchpad – Auto Lock The door Locks when you touch the palm on the keypad.

3 minute Lock Out Feature After five (5) unsuccessful attempts of an invalid code or fingerprint, lock out mode is activated for 3 minutes.

Smart Etiquette When entering a pin code on the keypad, the user can open the door lock in silent mode.

Fake PIN Code Security enhancement to enter any number before or after entering a password to prevent the PIN code from being exposed.

Internal Forced Lock It is a security-enhancing function that 'disables' authentication methods such as passwords and fingerprints from outside when setting up functions indoors.

External Forced Lock It is a security-enhancing function that an alarm goes off if someone opens door from inside when setting up functions outside.

Voice Guidance It guides you through the operation status on how to enable various features & settings- mode for easier and more convenient use.

Other features and Benefits Remote Controller (Optional): This option may not be available depending on your country or local dealer. Network Module/Controller (Optional): It allows door lock to connect with Home network controller. Intrusion/Broken Alarm. Low Battery Alarm and Emergency Power Supply.

Language Change

Registr-ation U (i) 4 # 5 #

1	Korean	#	*	OR	(i)
2	Chinese	#	*	OR	(i)
3	English	#	*	OR	(i)
4	Taiwanese	#	*	OR	(i)

Bluetooth setting (Yale Access app)

Registr-ation U (i) 7 # Set up a new device in the app

Remote Controller Up to 5 Users

Registr-ation U (i) 8 #

1	#	SET (button)	#	*	OR	(i)
Delete	(i)	U	#	*	OR	(i)

Home Network Controller

Registr-ation U (i) 9 #

1	#	Cont roller	#	*	OR	(i)
Delete	(i)	U	#	*	OR	(i)

Remote Controller Set with registration button located on the top of remote controller. You can press it using a pin like the one shown in the image.

Please note following when pairing lock with Yale Access App.

- Depending on product type or FW version, app registration and door lock connection in normal mode may not be possible, so if registration is not possible, change from normal mode to master mode and try again. [App Registration in Master Mode: Master Pin Code-> 1 (Registration Button)-> 7 -> #]
- Because Yale Access Bluetooth App is only available in master mode, user code automatically changes to master code when registering APP in normal mode.
- Please be informed that all registered credentials will be deleted when changing mode or registering and deleting app.

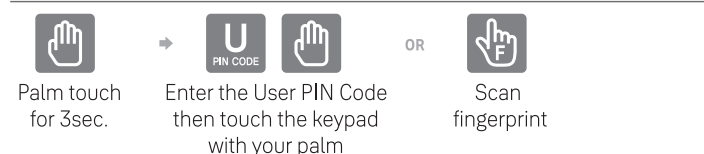
13. Opening Door(Inside/Outside)

From Outside Press the lever handle down to open door

From Inside To open when Safe Handle Settings are enabled : Keep pushing the safe handle button. And then, Press the handle down to open the door. To open when Safe Handle Settings are disabled : Press the lever handle down and open the door.

Internal Forced Lock Close the door and then move the lock button to "LOCK" position.

14. Unlocking Door with Smart Etiquette



15. Locking the Door(Inside/Outside)

Automatic Lock Mode(Inside/Outside) In automatic lock mode, the lock automatically locked within 5 seconds after closing the door and detecting the automatic lock sensor.

Manual Lock Mode The door locks when touching the keypad with the palm. (outside) Use Thumb turn knob on the main body. (Inside)

