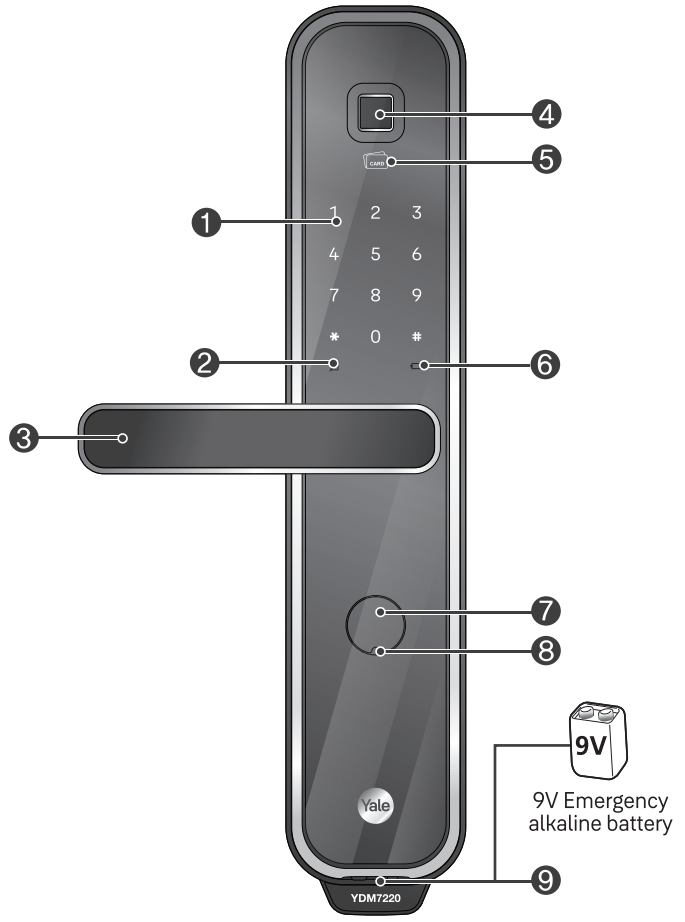
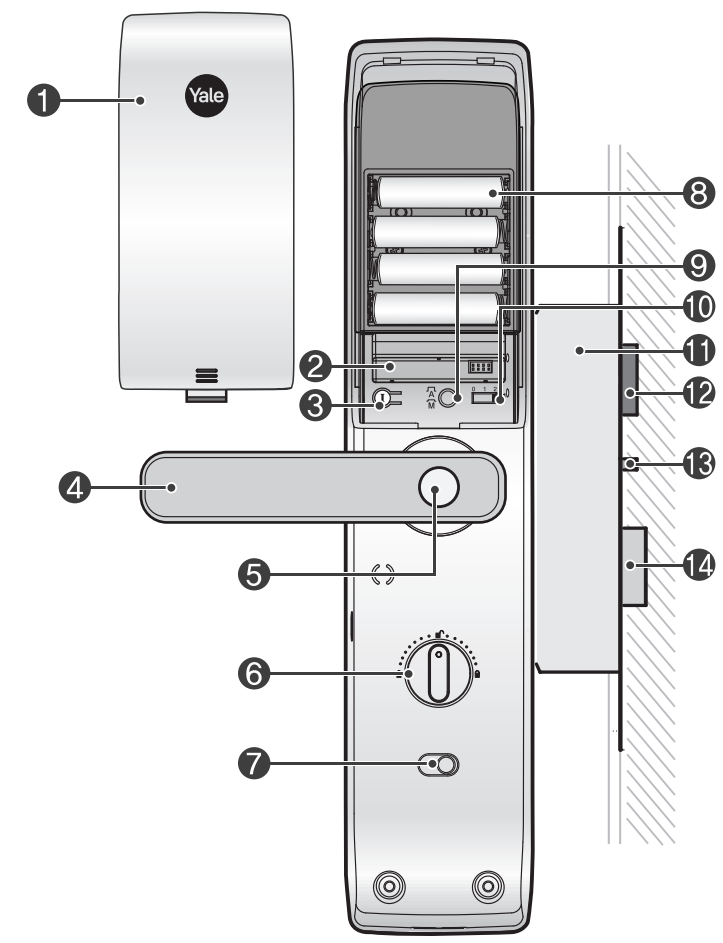


1. Front Body (Front Body, installation on the outside of the door)



4. Main Body (Main Body, installation on the inside of the door)



7. Setting Menu

Master Mode: Only a designated person who knows 'Master PIN Code' has authority to set features.
Normal Mode: If no user is assigned with master code without a designated person, anyone who knows 'User PIN Code' has authority to set features.
Visitor Code: Users with Visitor Code can only open the door with no access to change settings.
Onetime Code: The onetime code is used only once for unlocking the door lock and automatically deleted after usage.
User Slot Number: It should be 2 digits(like '01', '02'...'99', '00') and available in advanced mode.

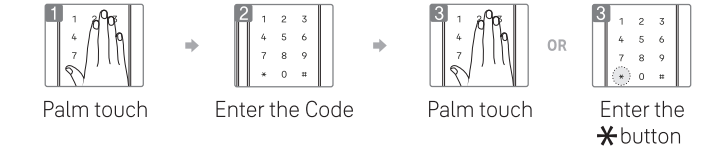
	Touch the Keypad of the Front Body with your palm to begin
	Press * button on the Keypad
	Press # button on the Keypad
	Press (Registration) button in every steps to start or complete the session
	Enter User RFID Key Tag (Up to 100 Users)
	Enter User Fingerprint (Up to 100 Users)
	Enter User Code (4 ~ 10 digits)
	Enter Master Code (4 ~ 10 digits)
	Enter Visitor Code (Only 4 digits)
	Enter Onetime Code (Only 4 digits)
	User Slot Number should be 2 digits (like '01'...'99' and '00': Location of 100th user slot must be assigned "00" instead of "100".)
	Rotation area to add more features

9. Normal Mode (Default Mode)

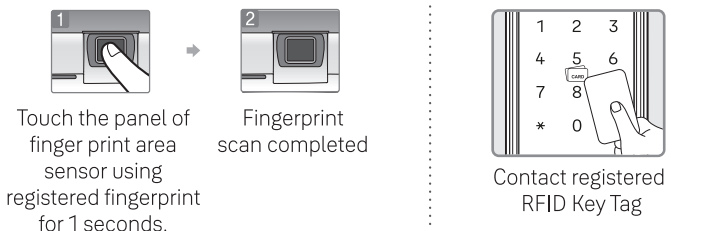
Normal mode is for convenient mode for anyone with user code to change various settings.

1	12 (Registration process)	* Continue / (Complete)												
1	2	3	4	5	6	7	8	9	10	11	12			
User Code Only 1 User														
Registr-ation														
RFID Key Tag Up to 100 Users														
Registr-ation														
Fingerprint Up to 100 Users														
Registr-ation				8times										
Visitor Code Only 1 User														
Registr-ation			1	#	V PIN CODE	#	* OR							
Delete			3	#	U PIN CODE	#	* OR							
Onetime Code Only 1 User, Automatically deleted after use														
Registr-ation			2	#	1	#	O PIN CODE	#	* OR					
Delete			3	#	U PIN CODE	#	* OR							
Delete all credentials (Fingerprint, RFID Key Tag)														
Delete all finger-print			3	#	1	#	U PIN CODE	#	* OR					
Delete all RFID Key Tag			2	#	U PIN CODE	#	* OR							

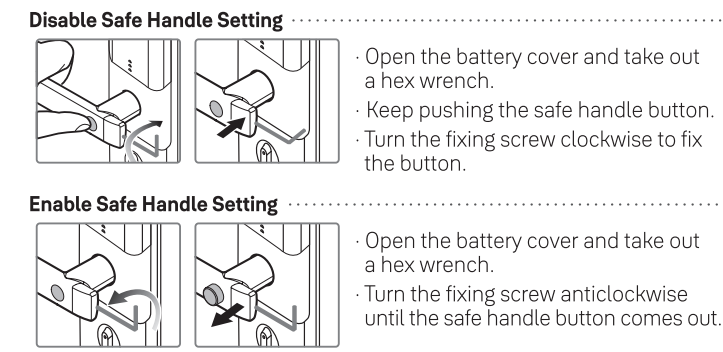
10. Unlocking Door with Code



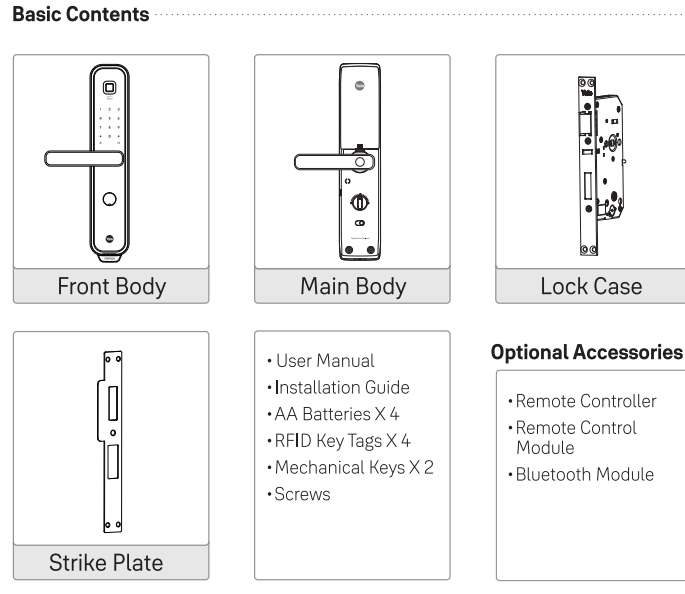
11. Unlocking Door with Fingerprint / RFID Key Tag



12. Safe Handle Feature



2. Basic Contents



3. Specifications

Parts	Specifications	Remarks
Front Body	68(W) X 335(H) X 64.5(D) mm	Operating temperature -15~55°C (5~131 °F)
Main Body	72(W) X 344(H) X 36(D) mm	
Works for	4EA 1.5V AA Alkaline batteries(Operating voltage: 4.5~6V)	
Optional product	Remote controller, Module and etc	

* Battery life may vary depending on temperature, moisture levels, frequency of use and the quality of battery used.

5. Front Body

1	Keypad(10-key)
2	Dead Bolt Jam Lamp
3	Lever
4	Fingerprint Sensor
5	RFID Key Tag Reader
6	Low Battery Indicator
7	Emergency key cover
8	Emergency Mechanical Key Slot (Inside)
9	Emergency Power Supply Terminal

6. Main Body

1	Battery Cover
2	Module Accessory Slot (Optional)
3	(Registration) button
4	Lever
5	Safe Handle Button
6	Manual Thumb Turn
7	Internal Forced Lock Switch
8	1.5V AA Alkaline Batteries (4PCS)
9	Auto/Manual Lock Button
10	Volume Control Switch
11	Lock Case
12	Latch Bolt
13	Automatic Locking Sensor
14	Dead Bolt

8. Product Features

One Touch Fingerprint Access
Secure one Touch Live fingerprint detection for personalized access. Unique Sensor not only provides high security but faster unlocking experience as well.

Yale Access App
Yale Access gives you the peace of mind of knowing who and what you love is safe - no matter where you are- just at the touch of your smartphone.

Smart Touchpad - Auto Lock
The door Locks when you touch the palm on the keypad.

3 minute Lock Out Feature
After five (5) unsuccessful attempts of an invalid code or fingerprint, RFID key tag lock out mode is activated for 3 minutes.

Smart Etiquette
When entering a pin code on the keypad, the user can open the door lock in silent mode.

Fake PIN Code
Security enhancement to enter any number before or after entering a password to prevent the PIN code from being exposed.

Internal Forced Lock
It is a security-enhancing function that 'disables' authentication methods such as passwords, RFID key tags and fingerprints from outside when setting up functions indoors.

External Forced Lock
It is a security-enhancing function that an alarm goes off if someone opens door from inside when setting up functions outside.

Voice Guidance
It guides you through the operation status on how to enable various features & settings- mode for easier and more convenient use.

Other features and Benefits

- Remote Controller (Optional): This option may not be available depending on your country or local dealer.
- Network Module/Controller (Optional): It allows door lock to connect with Home network controller.
- Intrusion/Broken Alarm.
- Low Battery Alarm and Emergency Power Supply.

Language Change

Registr-ation			4	#	5	#	1	Korean	#	* OR		
								2	Chinese	#	* OR	
								3	English	#	* OR	
								4	Taiwanese	#	* OR	

Bluetooth setting (Yale Access app)

Registr-ation			7	#	Set up a new device in the app						
---------------	--	--	---	---	--------------------------------	--	--	--	--	--	--

Remote Controller Up to 5 Users

Registr-ation			8	#	1	#	SET (OUT LOCK)	#	* OR	
Delete			3	#	U PIN CODE	#	* OR			

Home Network Controller

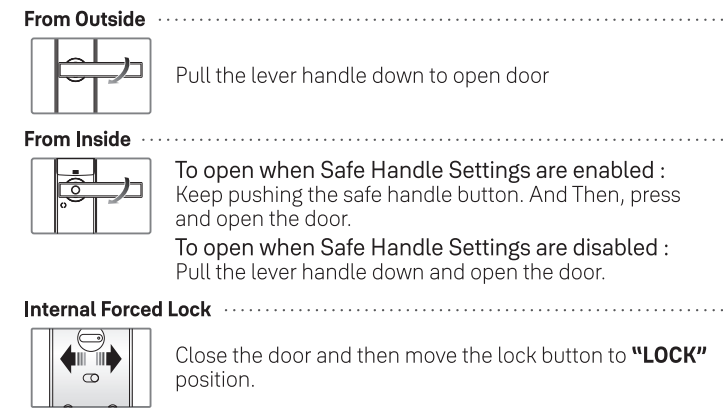
Registr-ation			9	#	1	#	Cont roller	#	* OR	
Delete			3	#	U PIN CODE	#	* OR			

Remote Controller
Set with registration button located on the top of remote controller. You can press it using a pin like the one shown in the image.

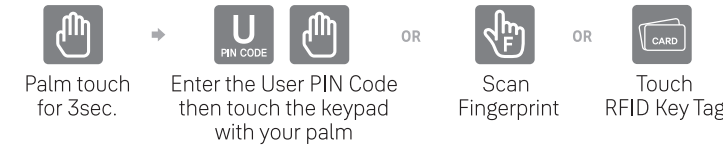
Please note following when pairing lock with Yale Access App.

- Depending on product type or FW version, app registration and door lock connection in normal mode may not be possible, so if registration is not possible, change from normal mode to master mode and try again. [App Registration in Master Mode: Master Pin Code-> (Registration Button)-> 7-> #]
- Because Yale Access Bluetooth App is only available in master mode, user code automatically changes to master code when registering APP in normal mode.
- Please be informed that all registered credentials will be deleted when changing mode or registering and deleting app.

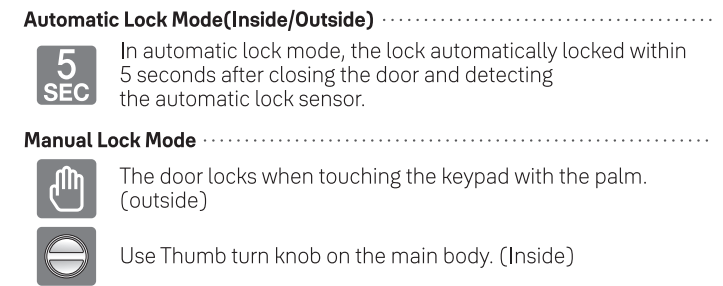
13. Opening Door(Inside/Outside)



14. Unlocking Door with Smart Etiquette



15. Locking the Door(Inside/Outside)



16. Automatic/Manual Lock

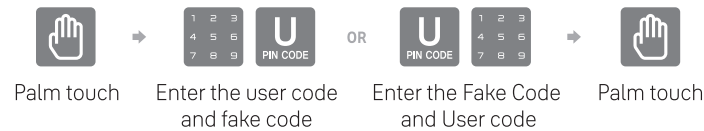
Enable Automatic Lock

Release the button to set automatic lock mode on the main-body (after opening the battery cover)

Enable Manual Lock

Press the button to set manual lock mode on the main-body.

17. Unlocking Door with Fake Code



18. External Forced Lock

Enable External Forced Lock : Fingerprint

Scan with registered Fingerprint and hold the fingerprint area until you hear 3 beep sounds.

Enable External Forced Lock : User Code



Enable External Forced Lock : RFID Key Tag

Contact RFID key tag on [RFID key tag reader] for 5 sec. until you hear 3 beeps.

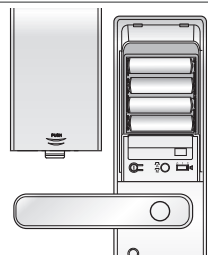
Disable External Forced Lock

When the door is unlocked from outside based upon proper authentication, the External forced lock will be released.

19. Volume

The operation sound volume will be adjusted according to the Volume Switch setting.

0 1 2 High 0 1 2 Low 0 1 2 Mute



20. 3 Minute Lock Out

All access mode from the external side are disabled for 3 minutes to deter unauthorized access.

Disable 3-minute Lock Out

- Open with inside door bar.
- Open the door with mechanical key.
- Press 1 button.

21. Alarm

Intrusion Alarm : The alarm goes off when someone forces the door open. For example, In case of an intrusion by opening a gap in the door while the door is locked.

Broken Alarm(Breakage Alarm) : The alarm goes off when the front part is completely separated from the main set. For example, forced removal of external product (front body).

Turn off alarm

- Enter the registered User code.
- Press 1 button for 5 seconds.
- Enter the registered Fingerprint.
- Touch the registered RFID Key Tag.

22. Emergency power supply for discharged batteries



23. Power supply

One-on-one real life size 1.5V(LR6) Alkaline AA Battery

It may sustain 1 year if used 10 times a day. (Users are advised to use authentic Alkaline batteries.)
* Kindly dispose used batteries.

You must replace all 4 batteries in the following cases:

- * The Low Battery LED on keypad flickers red.
- * When low battery notification message is played.

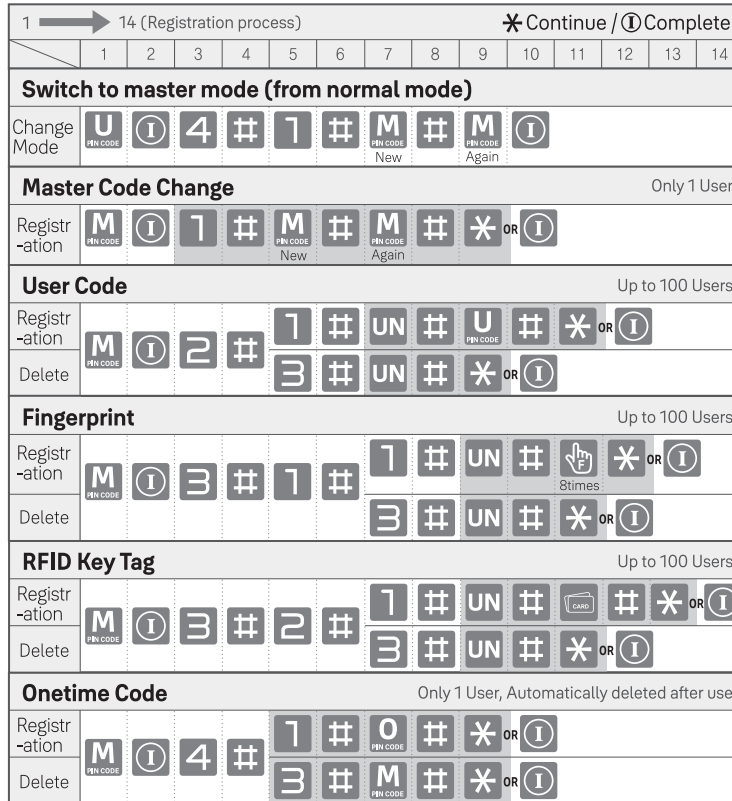
RISK OF EXPLOSION IF BATTERY IS REPLACED BY AN INCORRECT TYPE. DISPOSE OF USED BATTERIES ACCORDING TO THE NATIONAL CODE OR RECYCLING PROGRAM.

24. Code Chart Duplicate if necessary

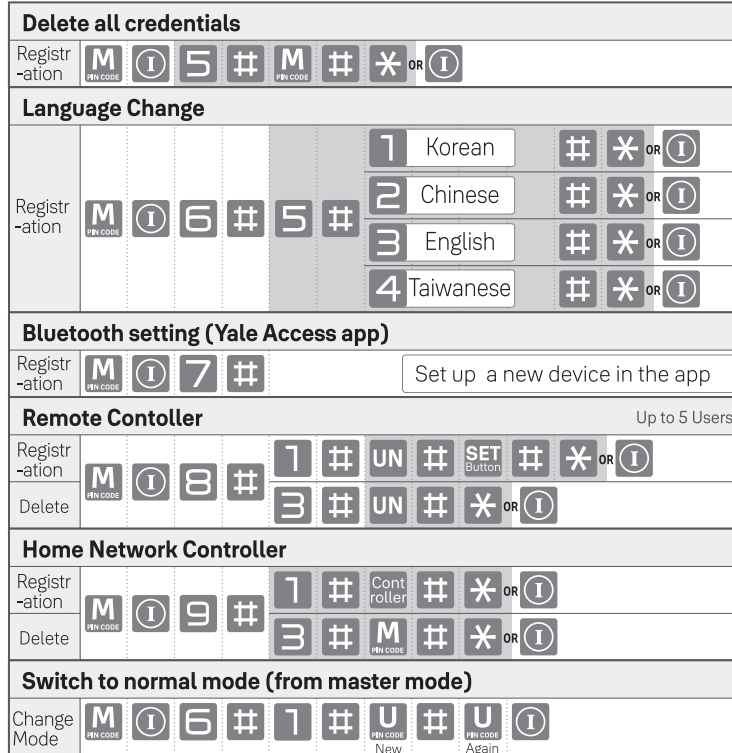
PIN Code Management(Up to 100 Users.)		
User Type	User Name	PIN Code
Master		
User ___		
User ___		
User ___		
User ___		
User ___		
User ___		
User ___		
User ___		
User ___		
User ___		
User ___		
User ___		
User ___		
User ___		
User ___		
User ___		
User ___		
User ___		
User ___		
User ___		

25. Master Mode

Master mode is a mode in which only the administrator can set the door lock and provide access to other users. 100 users passwords, 100 users RFID key tags, 100 users fingerprint and individual registration and deletion of one-time passwords enable efficient management of visitors.

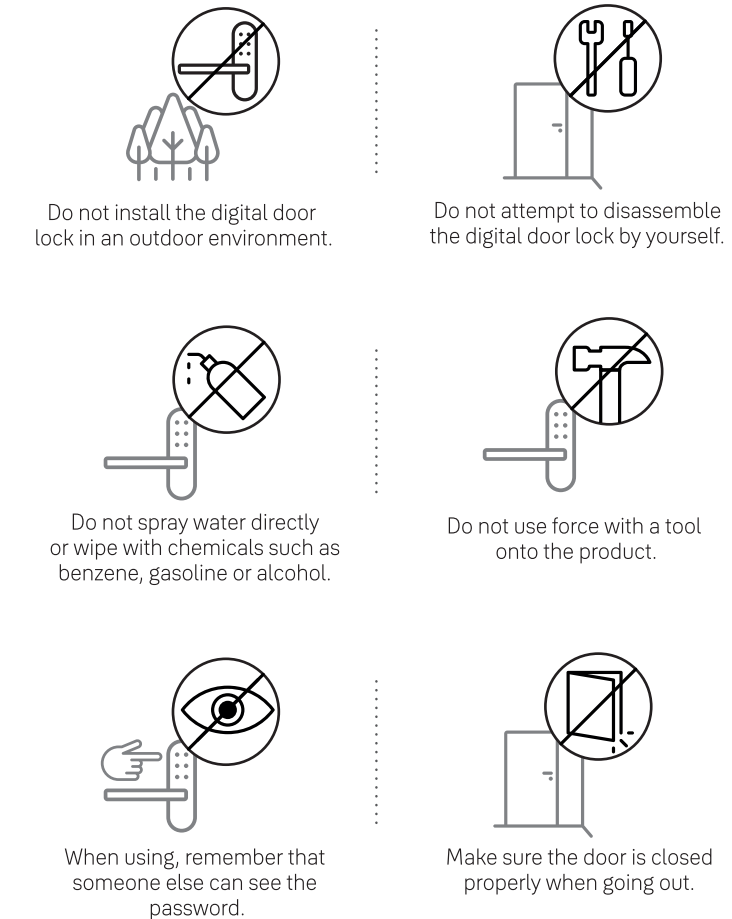


※ UN User Slot Number should be 2 digits. (like '01' ... '99' and '00': Location of 100th user slot must be assigned "00" instead of "100".)



※ Voice guidance :Voice guidance features assist in easy navigation through various features.
※ All registered passwords and other credentials will be deleted when mode is changed.
※ Please install(register) the network module when you want to use a remote control or home network.

26. Important notes



27. Safety and Warning

- Do not install the digital door lock in an outdoor environment.
- Do not attempt to disassemble the digital door lock by your self. By doing so, you may get an electronic shock and damage the product.
- Do not use force with a tool onto the product.
- Make sure to lock the door tight when you go out.
- Be careful not to hit the handle as it may cause injuries.
- Do not use water and any type of solvent to clean the product such as gasoline or benzene as they can cause damage to electronic circuit, deterioration and or paint peel-off.
- It is recommended to change User Code on a regular basis.
- In manual lock mode, make sure to double check whether the door is securely locked.
- When External Forced lock is set and unlock the door, the alarm will be activated.
- Do not use rechargeable batteries. Only alkaline batteries are recommended.
- Make sure to follow the above instructions to avoid any injuries.
- It cannot be guaranteed in a special conditions & environment such as water condensation, seaside.
- Warranty will not cover- exposure to dampness, excessive heat, excessive humidity and other extreme environmental conditions, corrosion, damage beyond repair, rusting, unauthorised modifications, unauthorised repairs, neglect, accident, alteration, acts of God, spillage of liquid or food particles.



User Guide

YDM7220

RFID Key Tag / Fingerprint / PIN Code / Key

Part of ASSA ABLOY

PLEASE READ INSTRUCTIONS BEFORE USE.
The functions and design of this product can be changed without prior notice for performance and quality improvement.



Packaging of this product can be recycled.



WEEE Note:
Waste electrical products should not be disposed of with household waste. Please recycle where facilities exist. Check your local authority or retailer for recycling advice.



ISL-1857-00-005