



User Guide



YH 1031V

Menu

Product description	P 01
Product introduction	P 02
Operation settings	P 03
-Important notes	P 03
-Factory reset	P 03
-Debugging operation instruction	P 03
Other instructions	P 04
-The door lock sound notice	P 04
-Password, fingerprint, card alarm	P 04
-Scramble code	P 04
-Power saving mode	P 04
-Low battery alarm	P 04
-Emergency power supply	P 04
Operating instructions	P 05
-User management	P 05
-Remote management	P 06
-System settings	P 06
-Mobile phone networking settings	P 07
-System queries	P 09
Temporary password method (WeChat applet)	P 10
Important notes	P 11

The pictures in this manual are for reference only, the actual product or parts may vary.

Product description

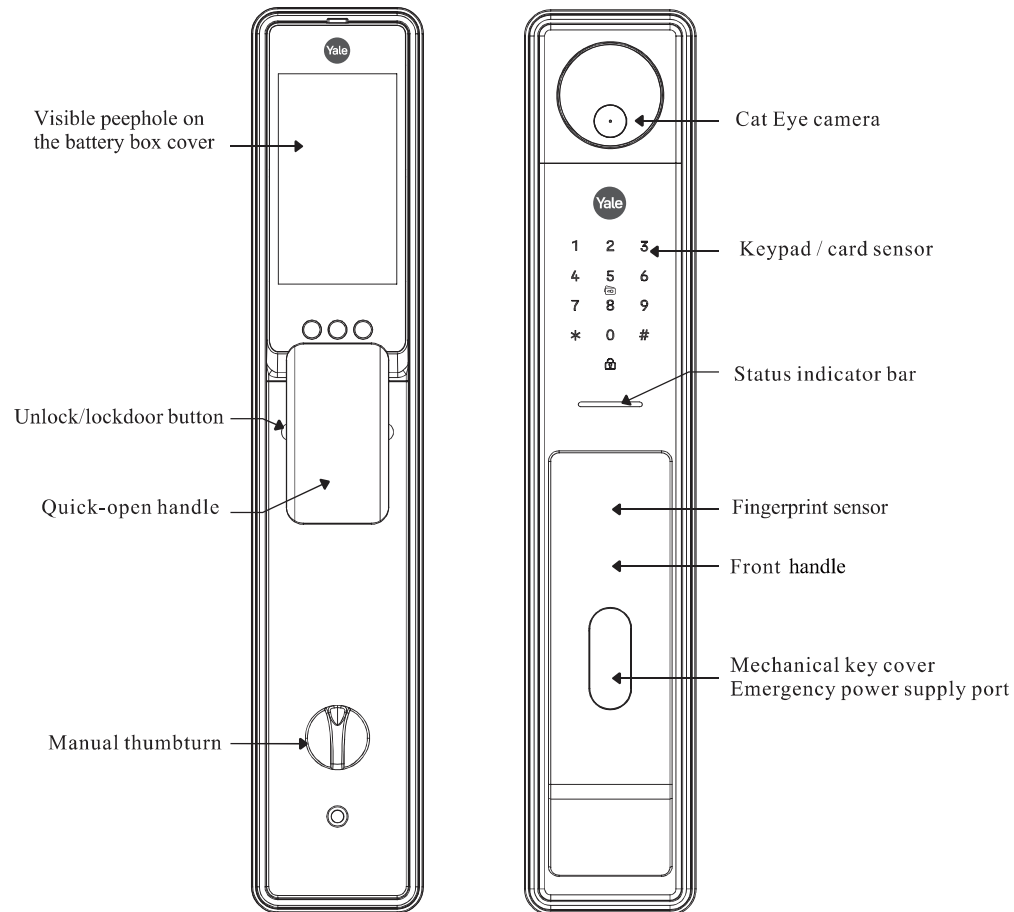
YH1031V automatic smart lock is an advanced smart door lock using a fully automatic lock case; it supports password, fingerprint, door card and temporary password method (WeChat applet) to unlock.

1. Five-in-one fully automatic unlocking method, fingerprint + password + card + WeChat temporary password + mechanical key.
2. Semiconductor biometric fingerprint sensor, anti-fake finger, anti-fake fingerprint unlock.
3. Open the door with WeChat temporary password, even if you are not at home, you can send a temporary password to someone who needs to enter the house to open the door.
4. C-level lock cylinder, anti-technical unlocking.
5. The entire lock has an anti-pry alarm, please do not use excessive force to open the lock.
6. System self-inspection, the system automatically detects the working status of various equipment.
7. USB emergency power supply to prevent the lock from being unlocked without power.
8. Equipped with voice navigation.
9. Doorbell function.
10. The door is opened by the built-in escape quick-open handle indoors, which is safer and more convenient to unlock.
11. One-button automatic unlocking and locking, eliminating the trouble of manual unlocking.

Specifications

Type	Content	Design indicators
Door opening key	Administrator	9 groups (number 001~009) front handle administrators can be fingerprint password or door card.
	User	191 groups (number 010~200) ordinary users can be fingerprint, password or door card.
	Mechanical key	2 pieces
Capacity	Number of fingerprint	Maximum 200 users
	Number of password	
	Number of door card	
Fingerprint	Fingerprint module false recognition rate	≤0.001%
	Fingerprint module rejection rate	≤0.15%
Recognition	Human body detection distance	0.7~1.0M, can be fine-tuned
Electrical characteristics	Working voltage	7.4V lithium battery
	Static current	<80~100μA (with remote control plus 20μA)
Working environment	Operating temperature	-25°C~70°C
	Operating humidity	93%RH

Product introduction



Important notes



1. Daily maintenance of smart door lock

The surface of the door lock needs regular daily maintenance to keep the door lock clean. You should use a soft cloth to wipe the surface. Do not directly spray water, alcohol or acidic chemicals to wipe.



2. Use of USB emergency power supply

When the power supply of the door lock is too low to unlock, it can be unlocked through an external emergency power supply. Note that after unlocking, please remove the battery and charge it immediately (the USB emergency power supply is only for emergency use, do not use it when the battery is charged)



3. Deformation of the door body caused by external force

If the door body is deformed, the friction of the deadbolt inserted into the strike eplate will be too large, so that it cannot be fully extended or even popped out. The position of the strike plate should be adjusted.

Temporary password method

(WeChat applet)



Scan WeChat applet
Share the key to unlock

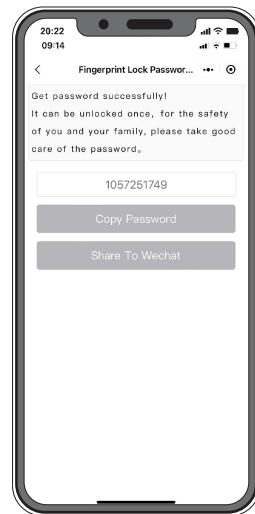
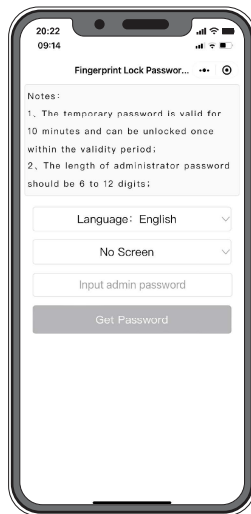
Please adjust the smart door lock time to be consistent with the mobile phone time.

Search applet on WeChat
(Fingerprint Lock Password)

Enter administrator password

Click "Get Password"

Enter the password or copy and send the password (the password is valid for 10 minutes and can only be unlocked once)



Operation settings

1. Important notes



- (1) All user record is empty on the new lock, door can be opened by face, fingerprint or door card.
- (2) The default administrator password is 123456, please change the default administrator password before use. The administrator password is the highest level password, please keep it safe!
- (3) The mechanical key is recommended to be kept in a safe place outdoors.

2. Factory reset



Press and hold the rear panel (lock button) for about 6 seconds, voice prompt to press # button to confirm factory reset, the voice prompt "initialization successful", any fingerprint can unlock. After initialization, the system default password is 123456 (after entering the administrator information, the system default password "123456" will be automatically deleted).



Caution

* Return key # Confirm key

Debugging Operation Instruction



Caution

It is only used by installation and commissioning personnel, please operate with caution; only operate this function when restoring factory status.

When no administrator is added, enter **8 8 8 + #**

1. Door opening direction
2. Motor torque
3. Reverse time

Note: The torque needs to be properly designed to ensure that it can be unlocked normally.

Note: During operation, press * to return to the previous factory menu until you completely exit the settings. After adding administrator, press 888+# to set the function invalid automatically

Note: The reverse time needs to be properly designed to ensure the normal unlocking status

Other instructions



1. The door lock sound notice

- One long beep: operation successful
- Short beep: key prompt
- Two short beeps: operation prompt
- Three short beeps: operation failed
- Siren sound: illegal operation/alarm/ low battery

2. Password, fingerprint, card alarm



If the wrong password is entered more than 3 times alarm consecutively, (password, fingerprint, and door card), alarm will be triggered for 15 seconds. If the password is entered again before it is released, the system will be locked for 180 seconds if exceeded 5 times, it can be released by re-powering.



3. Scramble code

Enter "XXX password XXX", you can add some random passwords before the password, and then press # to confirm. The password must be included in the input content. The password must be at least 6 characters and a maximum of 16 characters can be entered.



4. Power saving mode

The system automatically enters power saving mode if there is no operation for more than 8 seconds.



5. Low battery alarm

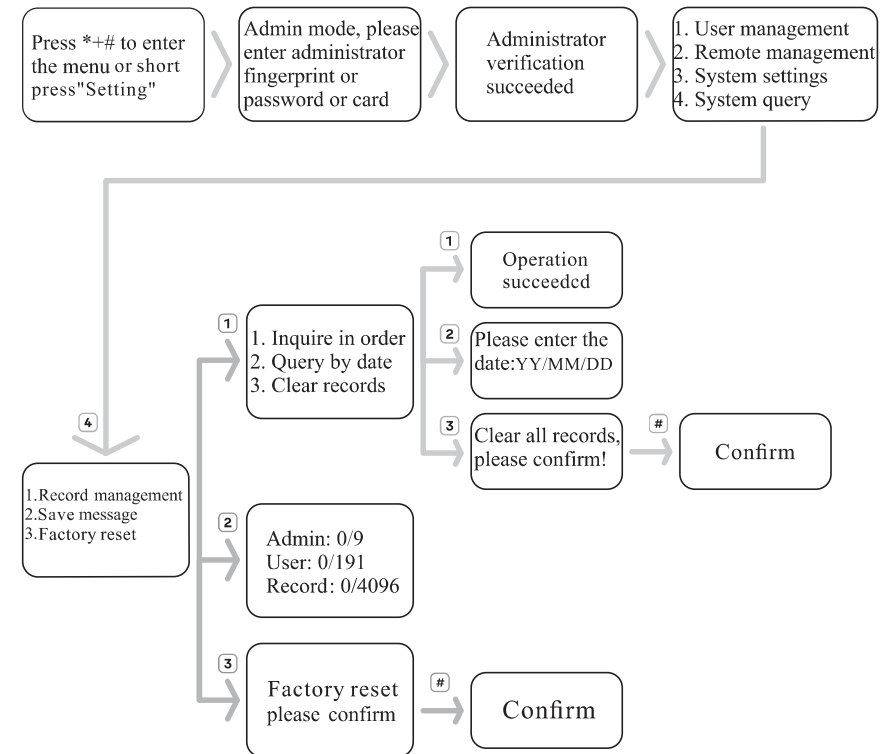
When the power is lower than 6.8V, it will prompt automatically (low power, please replace the battery in time), and it can still be unlocked about 200 times; please replace the battery/charge immediately.

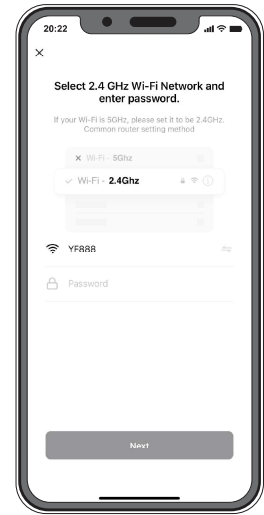


6. Emergency power supply

When the product is at the critical battery power level and not able to operate, an emergency power supply can be plugged into the emergency power supply via a 5V USB cable for emergency access (not for charging).

5. System queries

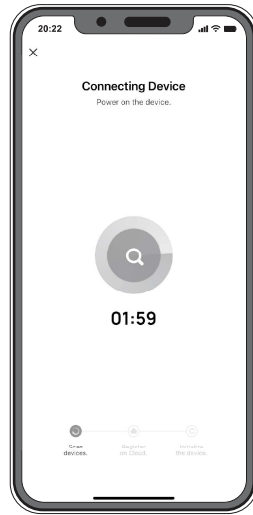




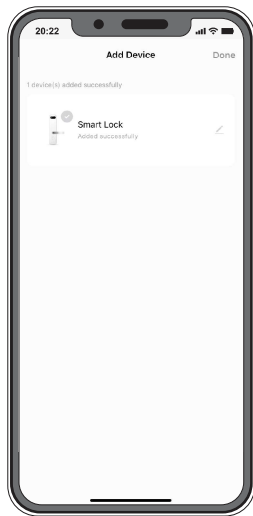
4. Select Wi-Fi hotspot and enter the password. The network property of the router must be 2.4G



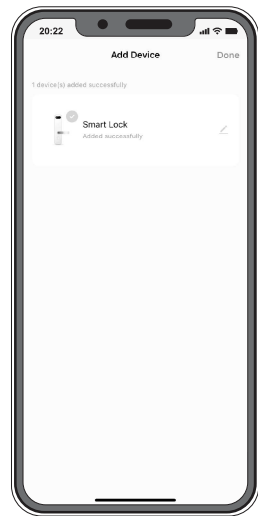
5. Click Next



6. Wait for the networking connected



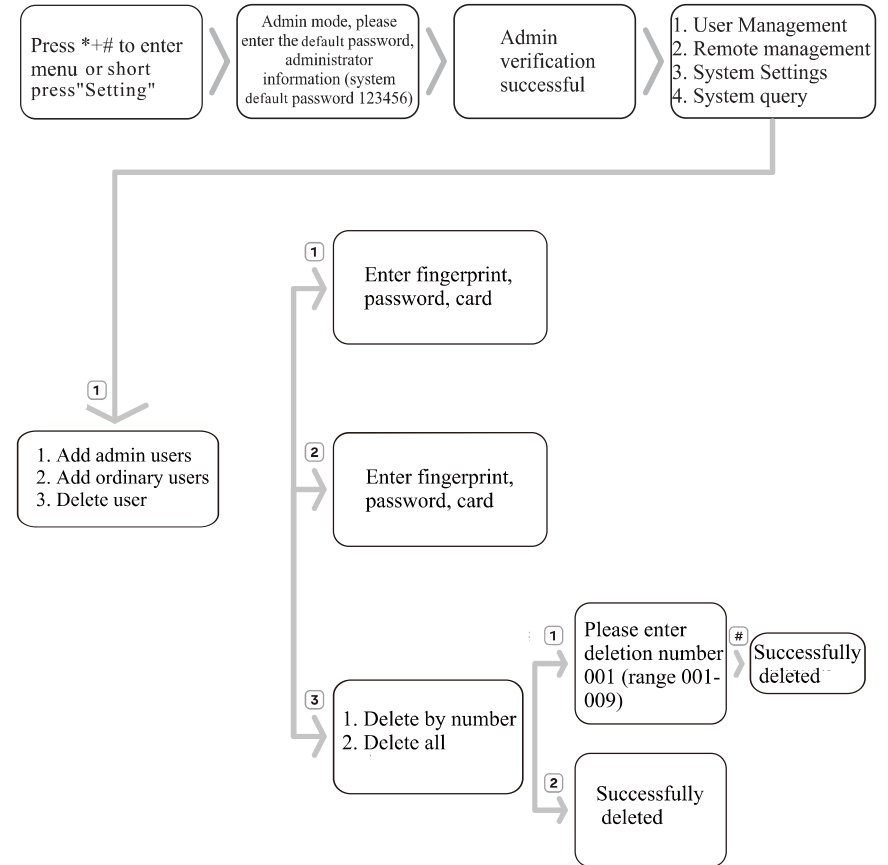
7. Successfully connected to the internet, click Finish



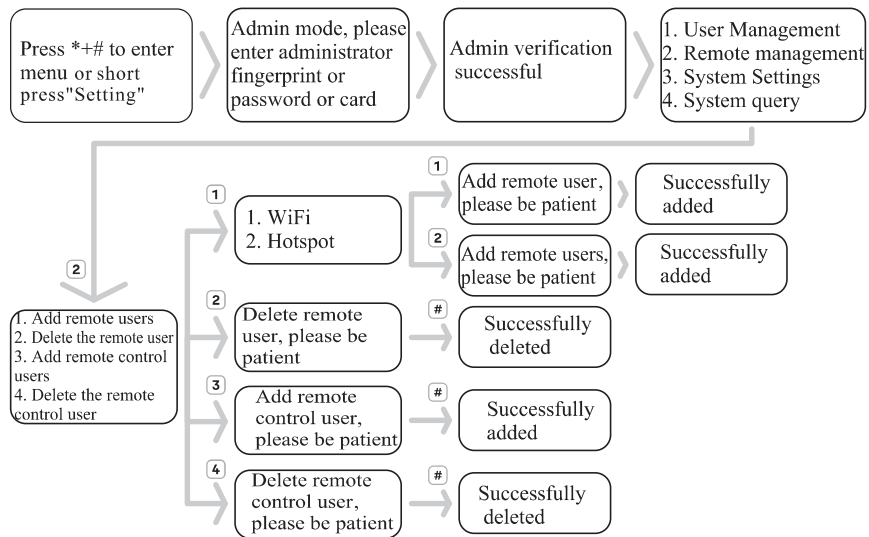
8. Networking completed

Operating instructions

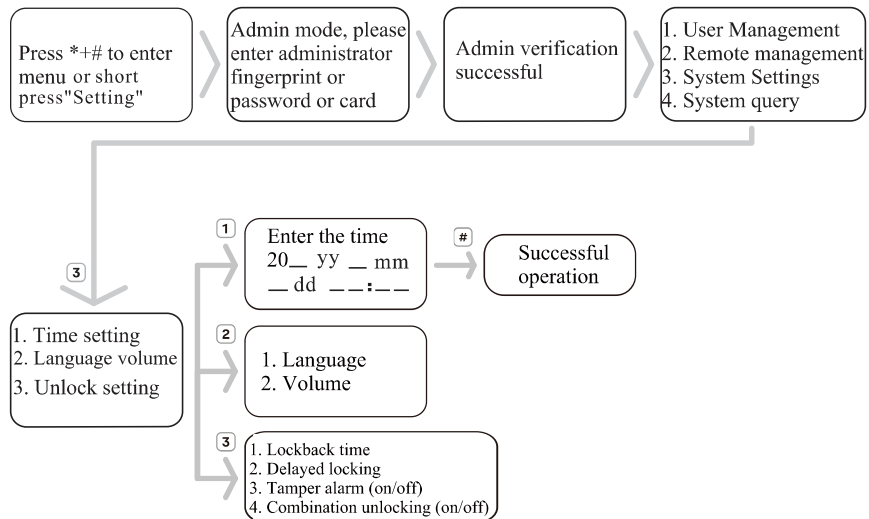
1. User management



2. Remote management



3. System Settings



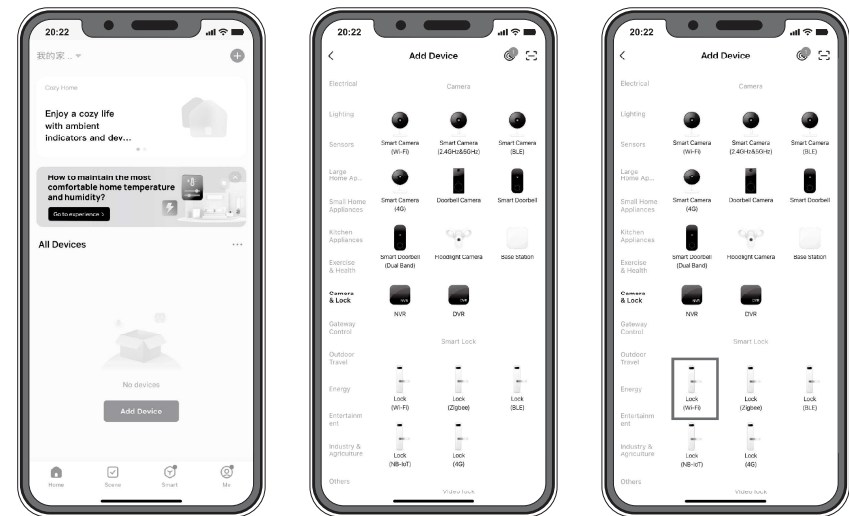
4. Mobile phone networking settings

Step 1 Scan the QR code to download the Tuya Smart APP



Tuya APP Download

Step 2 Open Tuya Smart APP



1. Click Add Device 2. Click Camera/Lock 3. Select Door Lock (Wi-Fi)